

The background features a light blue, semi-transparent grid pattern overlaid with several stylized, dark blue virus particles. A large, irregular, light blue cloud-like shape is centered on the page, serving as a backdrop for the text.

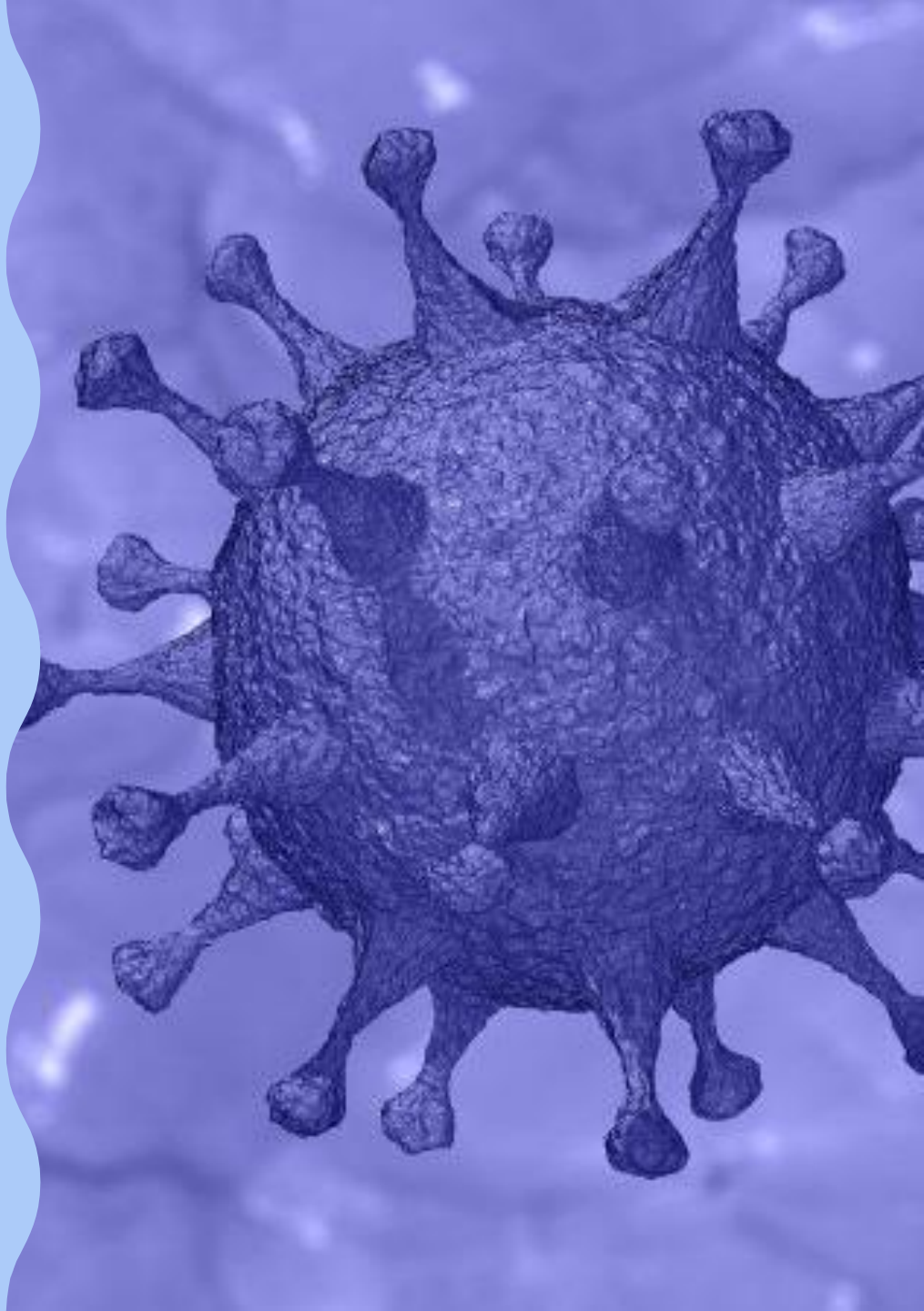
**ALONSO HIGH  
SCHOOL  
COVID-19  
REOPENING PLAN**

# BEFORE REPORTING TO SCHOOL

- Please assess your wellness before coming to school by asking yourself the following questions:
- Have you experienced any of these symptoms, not associated with previously diagnosed conditions, in the past 72 hours:
  - Fever greater than 100.4F/chills
  - Cough/shortness of breath
  - New loss of taste or smell
  - Nausea/vomiting/diarrhea
- In the last 14 days have you:
  - Been in close contact with anyone who has been diagnosed with COVID-19
  - Been placed on quarantine for possible contact with COVID-19
  - Traveled abroad or to an area of the country where it is recommended that you self-quarantine
  - Have a COVID-19 test pending

# STUDENT ARRIVAL

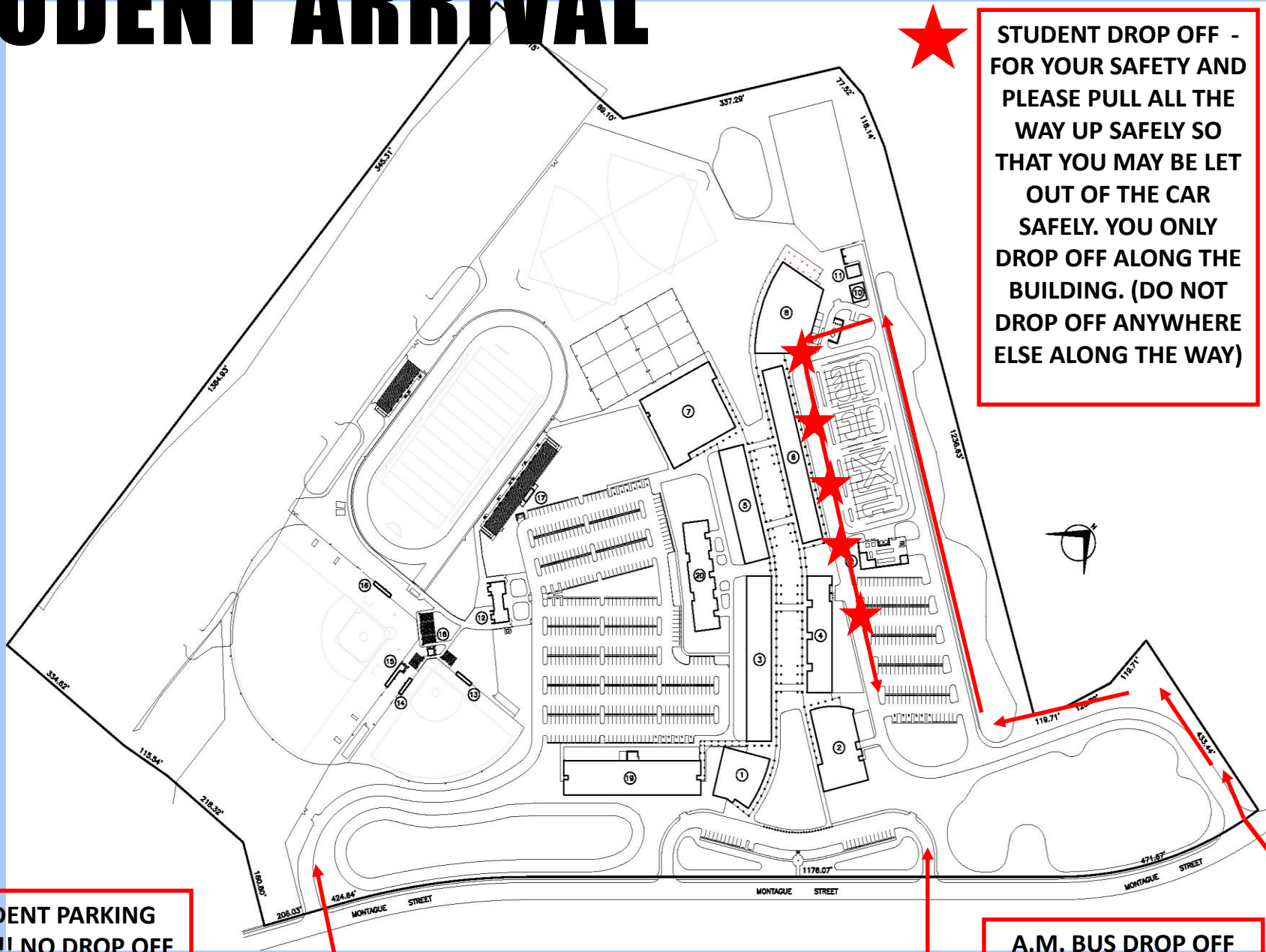
- THERE IS NOT SUPERVISION ON CAMPUS UNTIL 8:00AM. PLEASE DO NOT ARRIVE BEFORE 8:00AM
- FACE COVERINGS ARE OPTIONAL.
  - Unvaccinated Students are highly encouraged to wear masks.
- Student Parking will be open at 8:00am to students.
- Student Drop off will also be open at 8:00am (Drop off is in teacher faculty parking lot – see map on next slide)
- Walkers can start arriving to campus at 8:00am.
- Busses start drop off at 8:00am
- Breakfast will be available in the canyon and in the cafeteria



# STUDENT ARRIVAL

HILLSBOROUGH BLVD

WATERS AVE



**★**  
STUDENT DROP OFF -  
FOR YOUR SAFETY AND  
PLEASE PULL ALL THE  
WAY UP SAFELY SO  
THAT YOU MAY BE LET  
OUT OF THE CAR  
SAFELY. YOU ONLY  
DROP OFF ALONG THE  
BUILDING. (DO NOT  
DROP OFF ANYWHERE  
ELSE ALONG THE WAY)

STUDENT PARKING  
ONLY!!! NO DROP OFF  
HERE

A.M. BUS DROP OFF  
ONLY!

A.M. STUDENT DROP  
OFF

MONTAGUE STREET

# **LATE STUDENTS/SIGN INS:**

- **If a student arrives after 8:40am student MUST go to student affairs to be signed in.**
- **If the student drives to school and arrives late:**
  - **Student MUST come to student affairs to be signed in**
  - **Student will then take their sign in sheet and drive around to the student parking lot to be let on to campus**
  - **Assistant Principal/adult will unlock gate for student – student MUST show sign in sheet to Assistant Principal/adult unlocking the gate.**

# **SIGN OUTS:**

- **Sign outs will strictly be for emergencies only.**
- **No Sign Outs after 1:30pm on Mondays**
- **No Sign Outs after 2:30pm Tuesday-Friday**
- **Please call ahead with any concerns.**

# STUDENT DISMISSAL

- **Students will be dismissed at 2:35pm on Monday.**
- **Students will be dismissed at 3:35pm Tuesday - Friday**
- **NO students will be permitted to stay on campus unless they are participating in Athletics, Band, JROTC, Theater.**
- **ALL students who are participating in Athletics, Band, JROTC have to be cleared in order to participate.**

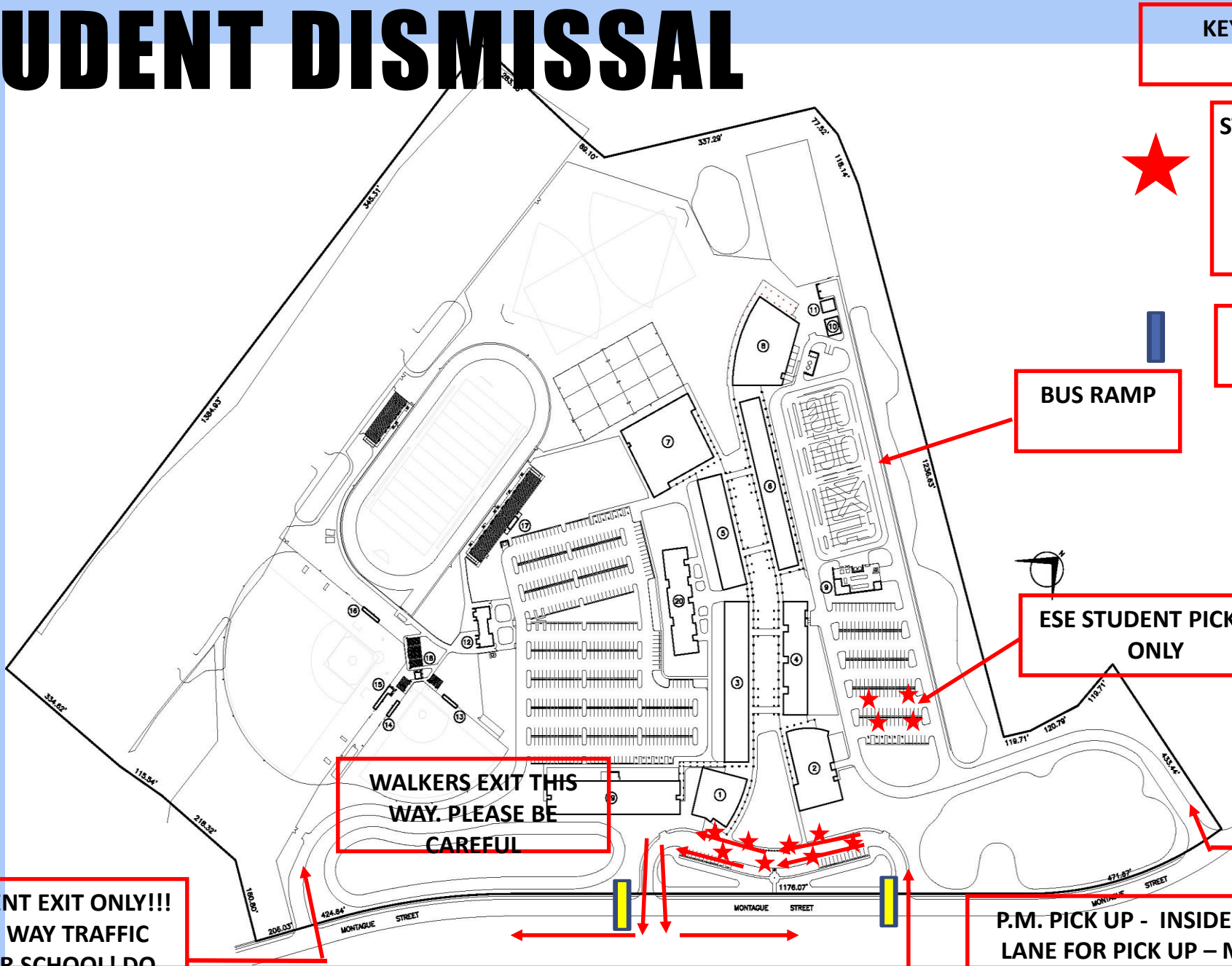
**STUDENT  
DISMISSAL  
3:35PM**



# STUDENT DISMISSAL

HILLSBOROUGH BLVD

WATERS AVE



KEY

★  
STUDENT PICK UP AREA  
– PLEASE KEEP  
MOVING FORWARD  
AND FOLLOW ADMIN  
DIRECTIONS

▬  
CROSSWALK

▬  
BUS RAMP

★  
ESE STUDENT PICK UP  
ONLY

★  
BUS PICK UP  
AND ESE  
STUDENT PICK  
UP ONLY

WALKERS EXIT THIS  
WAY. PLEASE BE  
CAREFUL

STUDENT EXIT ONLY!!!  
ONE WAY TRAFFIC  
AFTER SCHOOL! DO  
NOT ENTER

P.M. PICK UP - INSIDE LANE AND OUTSIDE  
LANE FOR PICK UP – MIDDLE LANE IS FOR  
EXIT. PLEASE DO NOT PICK UP IN THE MIDDLE  
LANE. FOLLOW ADMIN DIRECTIONS

MONTAGUE STREET

# LUNCH PROCEDURES

- **Please complete the lunch application online.**
- **Students will again eat for free this school**
- **Students may eat in the cafeteria and on the patio. We also have picnic tables.**
- **No students Upstairs at any time.**
- **If a teacher allows a student to eat in their classroom – the teacher MUST write a pass for that student.**
- **Please try and sit with the same group of friends for lunch.**
- **See Bell Schedule for when you have lunch. It is based on your 5<sup>th</sup> period class.**

- **A Lunch:**
  - **IB**
  - **Access Students (end of period)**
  - **ISS**
- **B Lunch: (lunch after 4<sup>th</sup> period then 5<sup>th</sup> period class)**
  - **Social Studies**
  - **World Languages**
  - **Career Technical**
  - **Business**
  - **Fine Arts**
  - **PE/Wellness**
- **C Lunch: (5<sup>th</sup> period class first then lunch)**
  - **English**
  - **Reading**
  - **ESOL**
  - **Math**
  - **Science**
  - **ESE Resource**



# VISITORS

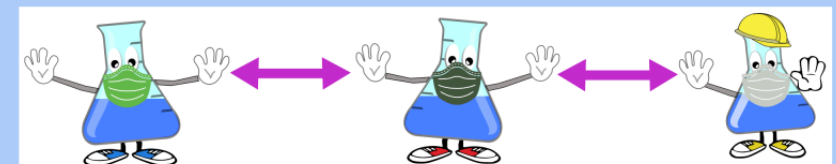
- There are no visitors on campus for the first 30 days
- Visitors **MUST** make appointments.
- Volunteers **MUST** complete Volunteer Application to be allowed access to campus.
- All visitors and volunteers **MUST** sign in in the main office
- Lunch drop off is **NOT** permissible

# PROMOTING HEALTHY PRACTICES

- **Wear a mask..**
- **Materials should NOT be shared.**
- **Stay home if you feel sick,.**
- **Social Distance .**
- **Wash hands.**
- **Cleaning and sanitizing.**
- **Throw your trash away.**



Social distance, please



# ATHLETICS, BAND, ROTC

- **Students MUST complete all forms online on Athletic Clearance**
- **Directions are online on our website**
- **Only CLEARED students are allowed to participate**
- **ROTC – paperwork is only required for those participating on ROTC teams.**
- **See Ms. Omensetter if you are on campus during your lunch for help or questions.**



# CLUBS

- **Must have a 2.0 to participate in extracurricular activities (freshman are exempt from GPA requirement their first semester)**
- **We will have club rush this year**
- **During lunch we will “promote” a club each day leading up to club rush**
- **See Club list on Alonso Website for Clubs offered and for sponsor**
- **See Ms. Stone if you have any questions about clubs.**

# **COVID PROTOCOLS** (SUBJECT TO CHANGE)

- **Isolation and Quarantine is still be in effect.**
- **Isolation/quarantine is 7 days returning on day 8**
- **Positive Covid Test = 10 days of Isolation regardless of vaccination status**
- **Close contact (within 6 feet for 15 minutes or more) = 7 days quarantine returning on day 8**
- **There is no e-learning option this year. Students will be expected to make up work as it is posted on Canvas or upon return to school.**

# POSITIVE COVID PROTOCOLS:

- Per the Florida Department of Health, the confirmed positive student will be required to isolate as per below:
  - Until the student receives a negative diagnostic COVID-19 test and is asymptomatic; OR
  - 10 days have passed since the onset of symptoms or positive test result (if asymptomatic), the student has had no fever for 24 hours and the student's other symptoms are improving; OR
  - The student receives written permission to return to school from a medical doctor licensed under chapter 458, an osteopathic physician licensed under chapter 459 or an advanced registered nurse practitioner licensed under chapter 464 and this documentation is shared with the school site.
- Individuals determined to be close contacts will quarantine for 7 days after exposure if they remain symptom free per FLDOH recommendations OR
- for 4 days after exposure if a diagnostic test taken on day 5 is negative and they remain symptom free.
- Vaccinated people and those who have tested positive in the last 90 days do not need to quarantine.
- Classrooms, if affected, will be deep cleaned per HCPS protocols within 24 hours.
  - Follow-up by the Department of Health-Hillsborough will occur, as appropriate, for all identified close contacts.
  - Return to athletics protocols will be followed once the student returns to school (if applicable)

# CLOSE CONTACT PROTOCOLS:

- Per the Florida Department of Health, the close contact I of a confirmed positive case will be required to quarantine for the length noted below:
  - Students will be quarantined for 7 days if they remain symptom free and can return to school on day 8 OR • Student will be quarantined for 4 days if a diagnostic test taken on day 5 is negative and if they remain symptom free. Students can return to school on day 5 after they receive negative diagnostic test results.
  - Students who are vaccinated or who have tested positive in the last 90 days do not need to quarantine.
  - Students who were within three (3) to six (6) feet of an infected student where both students were engaged in consistent and correct use of well-fitting masks will be excluded from quarantine.
  - Follow-up by the Department of Health-Hillsborough will occur, as appropriate, for all identified close contacts
  - Student must meet the following criteria prior to returning to school:
    - • No evidence of COVID-19 symptoms at any time during the 4-day quarantine period (if tested negative on day 5) or 7- day quarantine period.
    - • If COVID-19 tested, have received a negative COVID-19 test result, and share those results with the school site.
  - Close contacts I of a confirmed positive case are not required to be COVID-19 tested before returning to school.
  - Close contacts of a confirmed positive case who develop symptoms within 14 days after exposure cannot return to school and must seek medical attention.
  - Return to athletics protocols will be followed once the student returns to school (if applicable).



**WELCOME BACK  
RAVENS!**